



舟山盈泰螺杆制造有限公司
ZHOU SHAN INTAI SCREW MANUFACTURE CO.,LTD.

浙江·舟山市定海区双桥街道临港二路 1 支路 8 号
No.8#,1st Branch, Lingang 2nd road, Shuangqiao Industry Zone,
Dinghai Zhoushan, Zhejiang, China

国内销售电话 (Domestic Sales Phone)

手机 Mob:+86-137 5800 6308
电话 Tel:+86-580-8058728
传真 Fax:+86-580-8058708
E-mail:intai@zsytlg.com
Http://www.screw-china.co

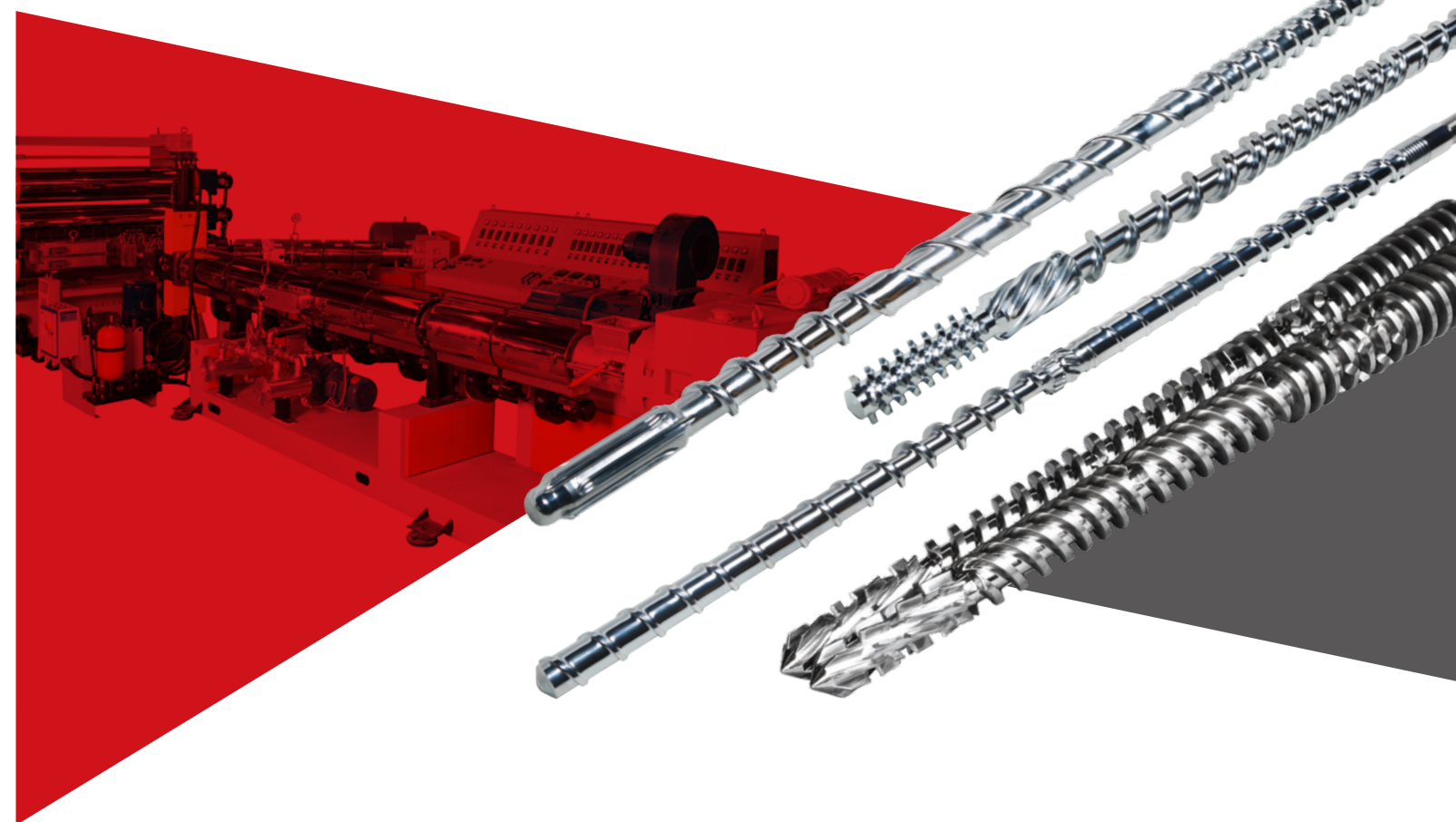


国外销售电话 (Export Dept. Phone)

Mob:+86-136 6198 9441
WhatsApp:+86-13661989441
Skype:cuijianv0
E-mail:april@zsytlg.com
Http://www.screwbarrel.co



如需了解更多信息, 请浏览盈泰官方网站: www.screw-china.co
If you need more information, please visit INTAI official website: www.screwbarrel.co



INTAI
Screw Manufacture

盈泰螺杆制造

一站式塑料挤出螺杆机筒及系统解决方案
One-stop plastics extruding screw barrel and system solutions



盈泰是一家领先的高品质机筒螺杆生产商 ——产品具有卓尔不群的性能

INTAI is one of the leading manufactures in producing plastic screw and barrel, with 20 years experience in this field, with the most rapid and stable growth.

Be committed to be the world first-class suppliers in screw and barrel.

INTAI with unique R&D, DESIGN, PRODUCTION and AFTER-SALES departments, so that all products are greatness.





公司简介 | Company Profile

盈泰(INTAI)是一家领先的高品质螺杆机筒生产商,凭着自身 20 多年的行业经验,一直以稳定的步伐逐步成长,致力于打造世界顶级的螺杆机筒优质供应商。公司拥有系列独一无二的研发、设计、生产、售后功能,以使产品具有卓尔不群的产品性能。

INTAI 公司位于世界最大的螺杆机筒生产基地舟山,公司技术力量雄厚,拥有大型精加工机筒螺杆的数控生产设备、计算机控制的氮化炉、恒温淬火炉热处理设备及双合金喷焊设备,配备先进的监控和质量检测设备。自成立以来不断吸收消化世界领先的科学技术和工艺,招揽业内优秀的工程师,并对特定的工程设计部门做出重大投资,拥有先进的设计创新和技术发展为特色的系统,建立并加强与国际顶级塑机制造商的合作,实现核心技术装备与欧美先进的塑料加工技术对接,为客户提供优于竞争对手的最终产品质量和设备功能。

INTAI 公司的产品范围已覆盖 20 多个国家,对于塑料挤出、注塑等全系列的螺杆料筒有着独到设计和见解,我们也设计特殊的结构、合金螺杆,为客户提供特殊的应用。

INTAI 公司在提供优质产品的同时,也为客户提供专业的项目技术解决和工艺支持,24 小时的售后服务更为设备的稳定运作提供了强劲动力!

INTAI is a leading high-quality manufacturer of screw barrel. By virtue of over 20 years of professional experience, INTAI has been growing at a steady pace and has been always committed to creating a world top provider of screw barrel. It owns a series of unique functions for R&D, design, production and after-sales which enable the products to be distinguished from others.

Located in Zhoushan, the largest production base of screw barrel in the world, INTAI has strong technology strength and is equipped with CNC production equipment for large-scale finish machining of screw barrel, computer-controlled nitriding furnace, heat-treating equipment for thermostatic quenching furnace, dual alloy spray welding equipment as well as advanced monitoring and quality testing devices. Since the foundation, INTAI has continuously introduced leading science and technology in the world, recruited outstanding engineers and invested much in the engineering design department. It owns a system that is featured by advanced design innovation and technical development. It has established and strengthened the cooperation with international top-level manufacturer of molding machine, realized the combination of independent core technical equipment and introduced plastics processing technology from Europe and the U.S., and has been always devoted to providing customers with products of superior quality and functions that excel other competitors.

INTAI sells its products to more than 20 countries around the world. It has unique design and view of the screw barrel for plastic extrusion and injection molding.

It also designs special structures and alloy screws to provide customers with specific applications. Providing high-quality products, INTAI supplies professional technical solutions and process support for customers. The 24h after-sales service is even the strong power for the stable operation of equipment.

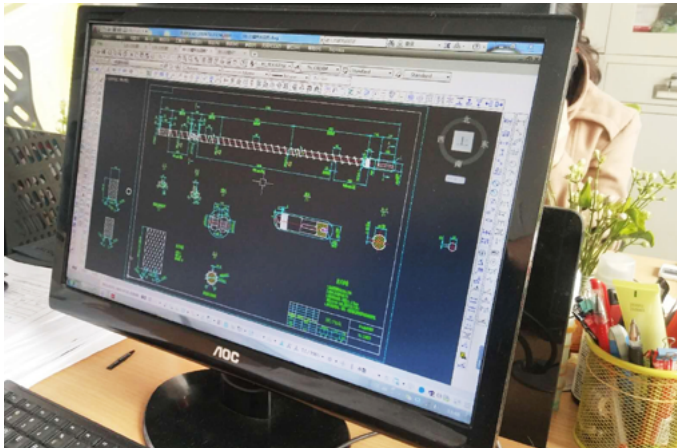
视为生命的品质管理 | Our product's quality is our life

在生产管理上，盈泰奉行“质量第一、节能环保”的方针；核心管理团队时刻监测着每个环节作业情况；定期开展专项培训，提高员工作业水平与工作效率。

严谨细致的生产管理、精益求精的作业理念让盈泰的加工制造生产能力以及产品质量得到飞跃式的发展；盈泰持续推动行业革新，积极参与国际市场竞争，打造世界知名品牌，为国内外客户创造财富和价值提供强有力的支持！

In production management, INTAI adheres to the policy "Quality first and energy-saving & friendly-protection oriented". The key management team monitors each process in production at any time, and regularly conducts special skill training in order to improve the operation skills and work efficiency of workers.

The strict and precise production management and the increasingly improving operation concept have brought about leap development for the processing and manufacturing capability and product quality of INTAI. Besides, INTAI has continuously pushed forward its innovative development, actively participated in competition in international market, built a world famous brand, and given powerful support for all customers at home and abroad to create wealth and values.



设计解决方案 Design solutions

盈泰的设计承载着完善、效率、信心与质量，我们的员工可靠、专业而负责。

INTAI infuses perfection, efficiency, confidence and quality into its design. Its employees are professional, reliable and responsible.



坚持创新进取 Be innovative and progressive

盈泰公司的产品可确保令人满意的生产效率。我们的研究团队富于创新，思路开阔，善于追求更高性能的解决方案。

Products of INTAI enjoy satisfactory production efficiency. The research team is innovative, open-minded, and clever at working for solutions with higher performance.



让客户满意 Let customers satisfied

盈泰公司以客户为本，为客户提供全程服务。客户的满意是我们的最高追求。

Being customer-oriented, INTAI offers one-step service for customers. It is our ultimate pursuit to make our customers satisfied.



完善的质量保证体系 Perfect quality assurance system

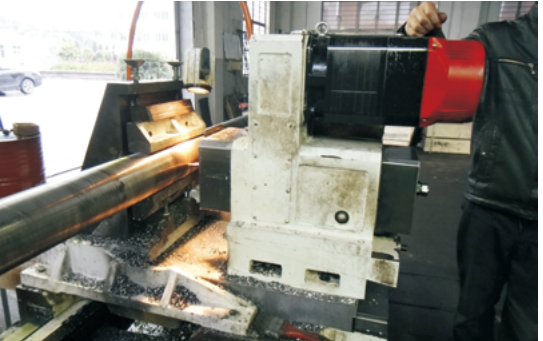
盈泰公司的制造理念先进而高效。原材均经过严格的筛选、产品均经过全面的质量检验以确保产品的稳定高效。

The manufacturing concept of INTAI is sophisticated and efficient. Raw materials are seriously screened and products are subject to overall quality testing in order to ensure that products are stable and efficient.

生产设备 | Advanced
facility

公司以专业技术，卓越的品质为根本，持续探索挤出、注塑螺杆机筒的生产技术精要，特引进先进的生产设备与检测设备和资深技术研发团队，确保产品在生产、检测、研发上无后顾之忧。以保障产品的生产效率和品质完善。

Regarding professional technology and excellent quality as the foundation for development, INTAI has persistently explored the production technology essence for screw barrel for extruding and injection molding. It has introduced advanced production and testing equipment and recruited an experienced R&D team in a lid to ensure that there will be no worries about the production, testing and research of products and guarantee the production efficiency and the quality perfection of products.

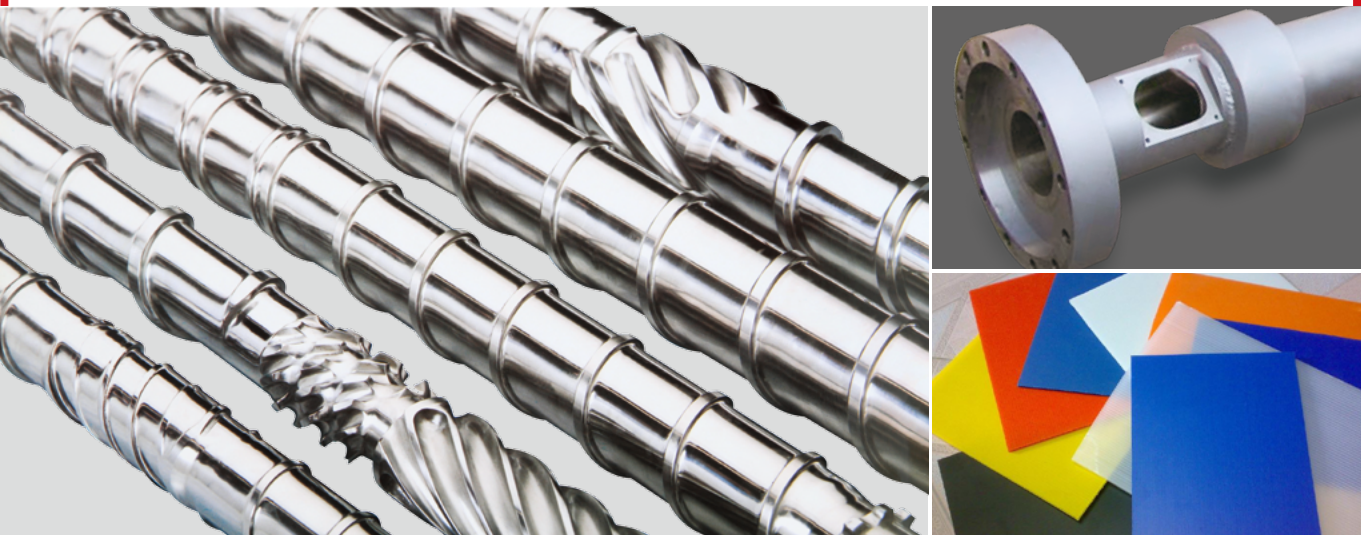


Screw barrel for
extrusion of sheets
片板挤出螺杆机筒



产品应用范围：
Field of application

- ◎ ABS、HIPS 冰箱板、汽车内饰板等
- ◎ PC、PP、PE 中空格子板等
- ◎ PVC 装饰板、化工板、发泡板等
- ◎ PC、PMMA、PET 光学片、折射片等领域
- ◎ PP、PS、PET、PVC 吸塑片、折盒片、食品包装等领域
- ◎ XPS、XPE、EPE、EPS 发泡片板、保温板等
- ◎ 其他：EVA、TPU、PVB、EVOH 片板领域
- ◎ ABS、HIPS refrigerator board and automobile interior panel, etc.
- ◎ PC、PP and PE hollow grating, etc.
- ◎ PVC decorative sheet, chemical board and foam board, etc.
- ◎ PC、PMMA、PET optical slices and refraction piece, etc.
- ◎ PP、PS、PET、PVC heat-seal sheets, folding box pieces and food packaging, etc.
- ◎ XPS、XPE、EPE、EPS foam board and insulation board, etc.
- ◎ Others: EVA、TPU、PVB、EVOH sheets, etc.

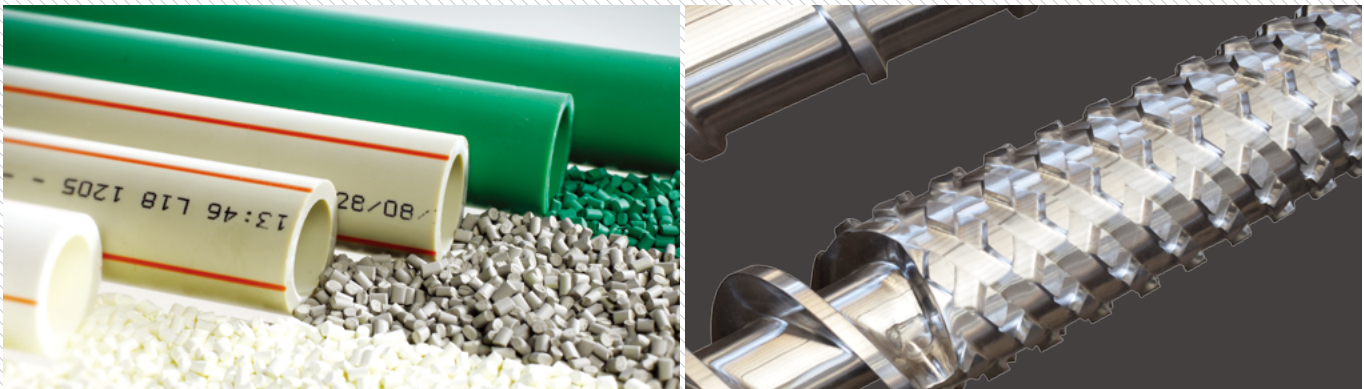


Screw barrel for extrusion
of tubular products
管材挤出螺杆机筒



产品应用范围：
Field of application

- ◎ HDPE/ PP/ PVC 大口径双壁波纹管
- ◎ UPVC 实壁管材
- ◎ PVC-C 埋地式高压电力线缆护套管
- ◎ PP-R、PE-RT、PE-X 等冷热水管
- ◎ RTP 骨架增强复合管
- ◎ P 超静音排水管
- ◎ PVC 医用管
- ◎ PMMA、PC、ABS、PP 等特殊管
- ◎ HDPE 供排水管、燃气管、大口径 HDPE 二层、三层双抗管
- ◎ HDPE/PP/PVC 大口径双壁波纹管及 PVC 加筋管
- ◎ MPP 电力管（改性聚丙烯管、MPP 电缆管、MPP 电力电缆保护管）
- ◎ PVC、PP 特种用途的小单壁、双壁波纹管
- ◎ HDPE/ PP/ PVC large-diameter double-wall corrugated pipe
- ◎ UPVC solid-wall pipe
- ◎ PVC-C buried high voltage power cable shield
- ◎ PP-R、PE-RT and PE-X cold and hot water pipe
- ◎ RTP framework reinforced composite pipe
- ◎ P super-silent drain pipe
- ◎ PVC pipe for medical application
- ◎ PMMA、PC、ABS、PP and other special-purpose pipes
- ◎ HDPE water supply and drainage pipe, gas pipe and large-diameter HDPE two/three-layer anti-scaling& corrosion pipe
- ◎ HDPE/ PP/ PVC large-diameter double-wall corrugated pipe and PVC rifflid tube
- ◎ MPP cable tube (modified polypropylene pipe, MPP cable tube and MPP cable shield)
- ◎ Special-purpose PVC and PP small single/double-wall corrugated pipe

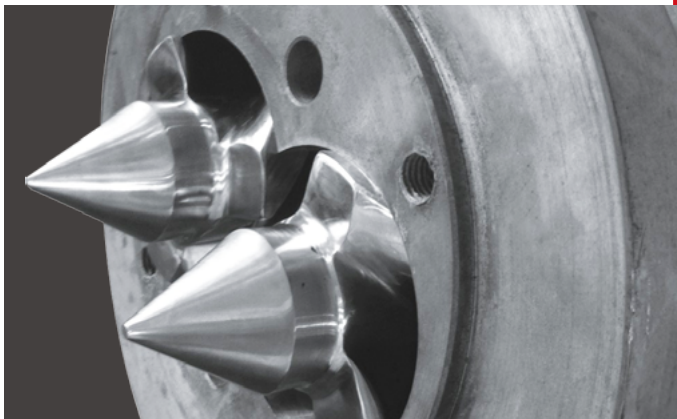


Screw barrel for extrusion of sections 型材挤出螺杆机筒



产品应用范围: Field of application

- ◎ PVC 塑钢型材
- ◎ PVC/PE/P P 木塑型材
- ◎ PVC/PP/PE/PC/ABS 等异型材挤出
- ◎ PVC 木塑 (发泡) 门板、装饰板等宽幅板材
- ◎ PS、PET、PC、PMMA、TPU 等异型材
- ◎ PVC profile
- ◎ PVC/PE/P P wood plastic profile
- ◎ PVC/PP/PE/PC/ABS pipe for profile extrusion
- ◎ PVC wood plastic (foaming) door sheet and decorative sheet and other wide sheets
- ◎ Profiled bars like PS, PET, PC, PMMA and TPU



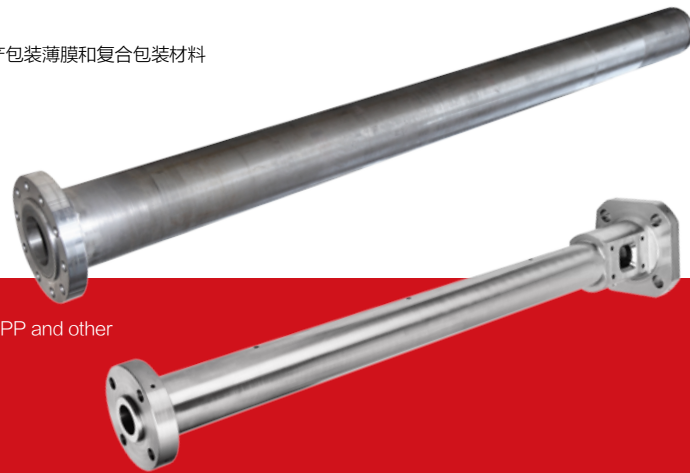
Screw barrel for extrusion of film blowing 吹膜挤出螺杆机筒



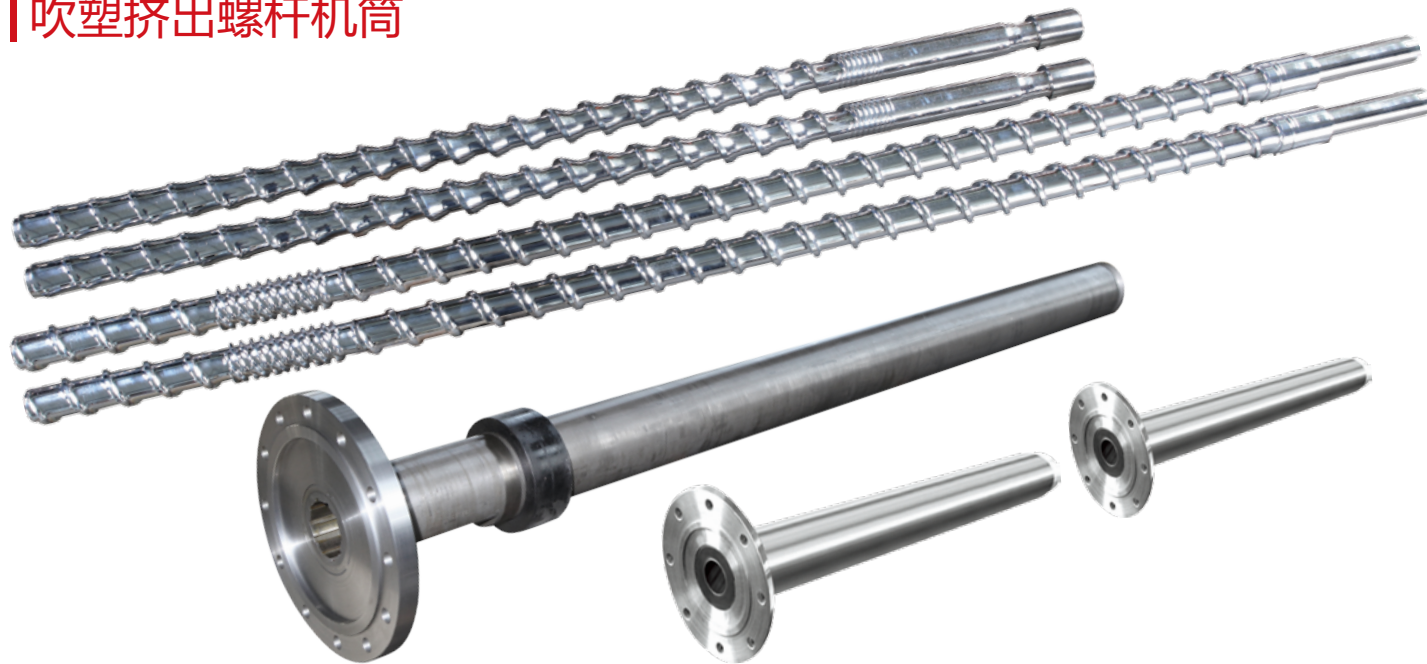
产品应用范围: Field of application

- ◎ PP、PA、EVOH、mLLDPE、LLDPE、HDPE 阻隔膜
- ◎ LDPE、mLLDPE、LLDPE、PP、二元共聚 PP、三元共 PP 等原料生产包装薄膜和复合包装材料
- ◎ PA、EVOH 高阻隔热收缩薄膜
- ◎ PP/PE/PP 结构的 POF 热收缩膜
- ◎ LLDPE、mLLDPE、LDPE、HDPE、EVA 土工膜等领域
- ◎ LLDPE、mLLDPE、LDPE、HDPE、EVA 等农膜
- ◎ mLLDPE、LLDPE、LDPE、EVA 等各类高透明性包装薄膜
- ◎ TPU 薄膜

- ◎ PP, PA, EVOH, mLLDPE, LLDPE and HDPE barrier membrane
- ◎ LDPE, mLLDPE, LLDPE, PP, binary polymerization PP, terpolymer PP and other packing film and composite packaging material for raw materials
- ◎ PA and EVOH high-barrier shrink film
- ◎ POF shrink film of PP/PE/PP structure
- ◎ LLDPE, mLLDPE, LDPE, HDPE and EVA geomembrane
- ◎ LLDPE, mLLDPE, LDPE, HDPE and EVA agricultural film
- ◎ mLLDPE, LLDPE, LDPE and EVA high-transparency packaging films
- ◎ TPU film



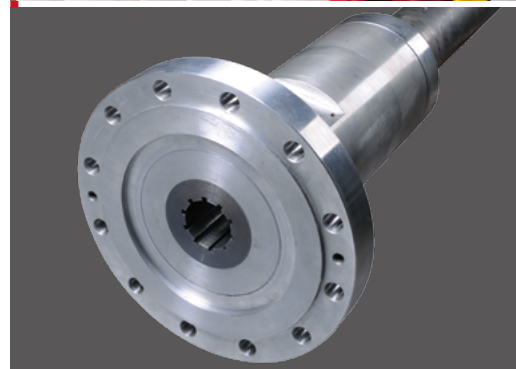
Screw barrel for extrusion of blow molding 吹塑挤出螺杆机筒



产品应用范围:
Field of application



- ◎ PE、PP、AS 等多种热塑性塑料为原料的任何形状的容量从 5 毫升到 500 毫升的塑料中空容器
- ◎ PC 五加仑纯净水桶吹塑成型 PVC 为原料的任何形状的容量从 5 毫升到 2000 毫升的塑料中空容器
- ◎ TPV、TPO、多种热塑性塑料为原料的任何形状的塑料中空产品
- ◎ PET、PE、PP 等热塑性塑料为原料的任何形状的容量从 10 毫升到 2000 毫升的塑料容器
- ◎ PE\PP\PVC\EVA 挤出吹塑产品
- ◎ PE\PP\PVC\EVA 挤出吹瓶产品



- ◎ 5-500ml hollow plastic containers in any shape with PE, PP and AS thermoplastic plastics as the raw materials
- ◎ 5-2,000ml hollow plastic containers in any shape with PVC blow molding from 5-gallon PC pure water bucket
- ◎ Hollow plastic containers in any shape with TPV, TPO and various thermoplastic plastics as the raw materials
- ◎ 10-2,000ml plastic containers in any shape with PET, PE and PP thermoplastic plastics as the raw materials
- ◎ PE\PP\PVC\EVA extrusion blow molding products
- ◎ PE\PP\PVC\EVA extrusion blow bottles

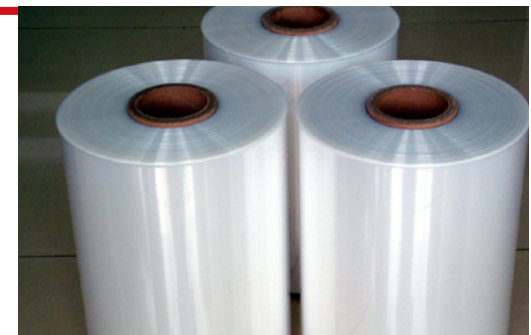
Screw barrel for extrusion of cast film 流延膜挤出螺杆机筒



产品应用范围:
Field of application

- ◎ PVB 玻璃夹层膜, 广泛应用于汽车及特殊应用行业
- ◎ PE 流延薄膜, 应用于包装行业
- ◎ BOPP 双向拉伸薄膜, 应用于包装行业
- ◎ PP 环保木纹膜, 应用于包装、装饰行业
- ◎ CPP 薄膜, PP 文具薄膜及 PP 文具片材
- ◎ EVA 高粘度流延薄膜, 广泛应用于安全平板夹层玻璃、弧型夹层玻璃、工艺夹层玻璃、防弹玻璃、变色夹层玻璃、导电智能玻璃、太阳能电池等特种玻璃的深加工之中。

- ◎ PVB glass laminated membrane widely used in automobile and other special industries
- ◎ PE cast film for packaging
- ◎ BOPP biaxially oriented film for packaging
- ◎ PP environmentally friendly wood grain film for packaging and decoration
- ◎ CPP thin film, PP stationery film and PP stationery sheets
- ◎ EVA high-viscosity cast film widely used in deep processing of special-purpose glass like safety plate laminated glass, curved laminated glass, process laminated glass, bullet-proof glass, photochromic laminated glass, conductive intelligent glass and solar cell.



Screw barrel for extrusion of cable 线缆挤出螺杆机筒

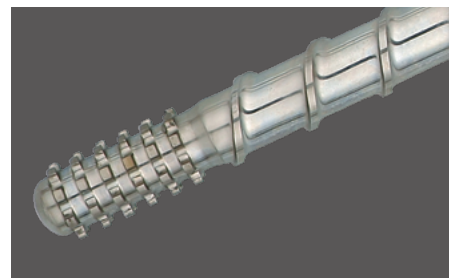
产品应用范围: Field of application

HDPE、PVC、LDPE、XLPE、LSHF、TPU、低烟无卤、低烟低卤、氟塑料铁氟龙(高温)、硅橡胶绝缘材料的电线电缆。

广泛应用于产品电子线、特种线缆、电源线、建筑线、绝缘护套、电话线、军工产品、电源线、音响线、网络线、电力电缆、空管、铜缆锁绳、汽车用线缆等。

Cable made of HDPE, PVC, LDPE, XLPE, LSHF, TPU, LSOH, LSLH, Fluoroplastic teflon (high-temperature) and Silicone rubber insulation material

Widely used for electronic wire, special cable, power line, building wire, insulating sheath, telephone wire, military product, audio line, network cable, power cable, blank pipe, copper cable lock rope and automobile cable, etc.



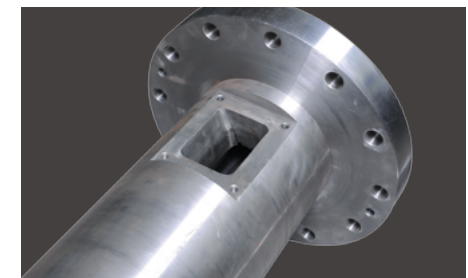
Screw barrel for extrusion of chemical fiber 化纤挤出螺杆机筒

INTAI 公司专业致力于挤出系统的研发与改进, 开发高标准并符合目前市场需求的产品。

20 多年专业机筒、螺杆、换网器、及熔体泵的丰富经验和先进技术, 实现您在激烈的市场竞争中脱颖而出。用于 PET、PA6、PA66、PP 等切片的熔融纺丝, 螺杆设计采用 LTM 低温混合元件, 塑化性能好。由于采用了专业加工技术, 使得螺杆、料筒的制造精度较高, 直线性较好。

INTAI is devoted to the professional research and improvement of extrusion system. Its high-standard development caters for products demanded on the market.

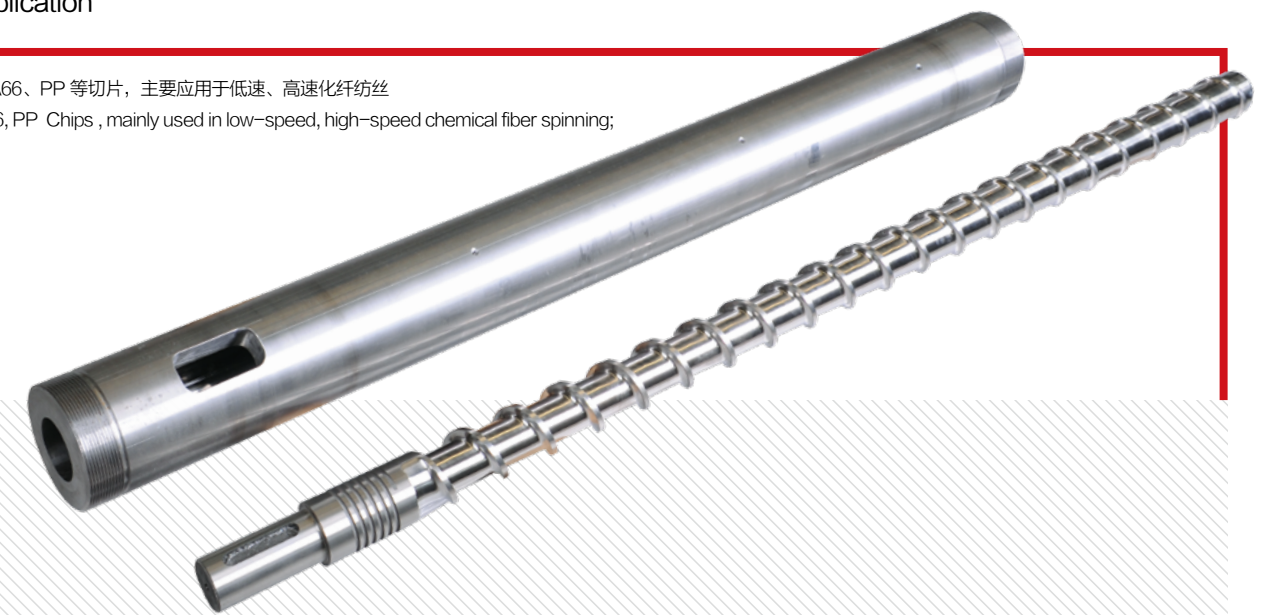
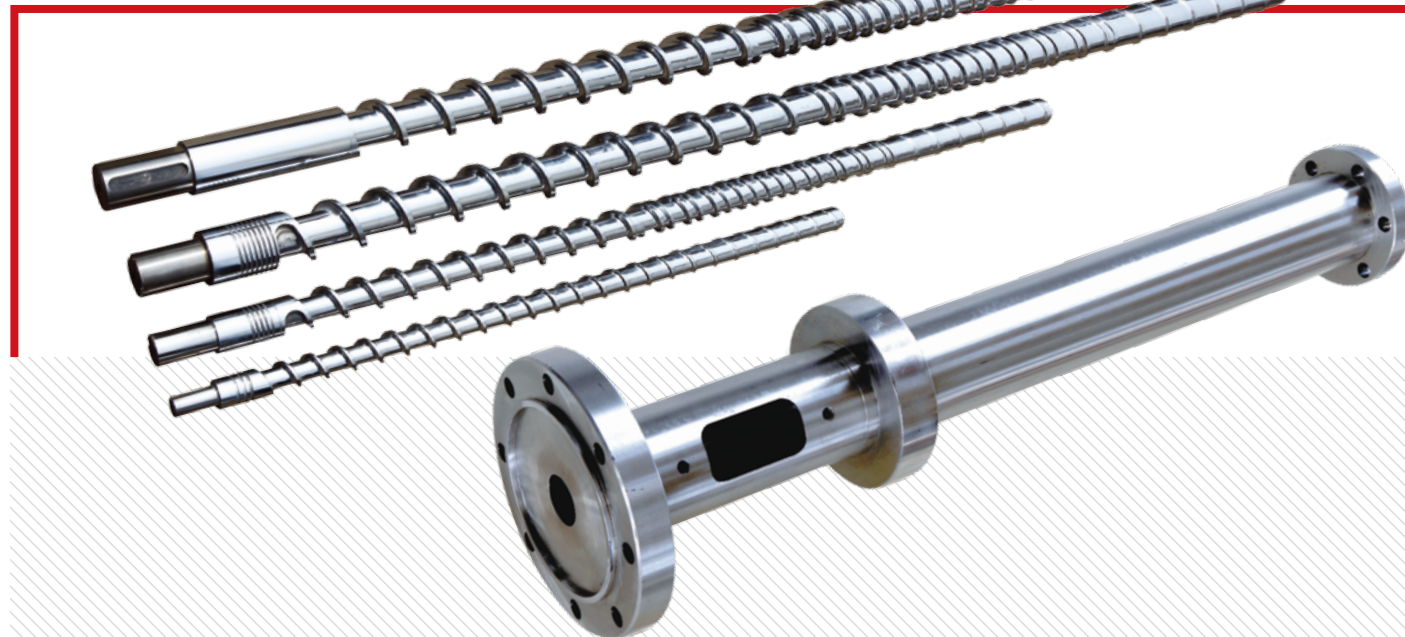
The rich experience and advanced technology for 20 years in barrel, screw, screen exchanger and melt pump help you stand out among competitors. The screws for PET, PA6, PA66 and PP sliced melt spinning is made from LTM (low-temperature and mixed) elements with good plasticization. The adoption of professional processing technology produces high accuracy of manufacturing for screw and barrel and also sound linearity.



产品应用范围: Field of application

PET、PA6、PA66、PP 等切片, 主要应用于低速、高速化纤纺丝

PET, PA6, PA66, PP Chips, mainly used in low-speed, high-speed chemical fiber spinning;



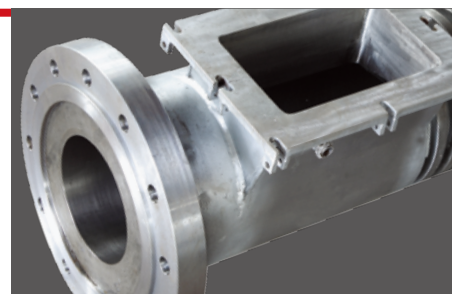
Screw barrel for recycling pelletizing extrusion 回收造粒挤出螺杆机筒



由于目前回收塑料的不断增多，塑料回收造粒产品对于越来越激烈的市场竞争起到了不可忽视的作用，生产高品质的塑胶粒子和高效率的造粒挤出是我们降低成本，增长利润的关键所在。

INTAI 也为您提供更加优化的整套造粒挤出生产线及系统改进方案。

With more and more recycling plastics, the plastic recycled plastics have played a considerable role in the more and more fierce market competition. Production of high-quality plastic particles and pelletizing extrusion with high efficiency are the essence to reduce cost and increase profit. INTAI also offers you with more optimized solutions for complete pelletizing extrusion line and its system improvement.



产品应用范围: Field of application

ABS、PP、PVC、HDPE、LDPE、PS、XPS、XPE、PET、PC、PMMA、EVA、TPU、PVB、EVOH 等薄膜，板材，管材，片材的造粒挤出。

ABS、PP、PVC、HDPE、LDPE、PS、XPS、XPE、PET、PC、PMMA、EVA、TPU、PVB、EVOH Film, board, pipe, sheet pelletizing ,etc



Screw barrel for injection molding 注塑成型螺杆机筒



盈泰公司的系列产品有效地将 20 余年经验的积淀与二十一世纪科技发展趋势相结合。公司产品系列全面，适用范围几乎覆盖塑料加工业各个领域，并能满足各类生产厂家对批量化通用塑料制品生产及精密制品生产等的不同需求，我公司产品多样，产品结构合理，设计包容性强，通过向客户提供高性价比的螺杆机筒及附件产品，为其创造极其重要的竞争优势。

The products of INTAI in all series have perfectly integrated its experience for over 20 years and the technical development achievements in the 21st century. The products of INTAI widely cover nearly all fields in plastic processing and meet the diverse demands of all kinds of manufacturers on the manufacturing of general plastics products and precision products in batches.

INTAI offers products of overall variety, reasonable structure and inclusive design. It strives to empower its customers with extremely important competitive advantages by its cost-effective screw barrels and the accessories.

Single injection capacity 45-51,000g; mold clamping force 200-60,000kN; and processing raw materials composed of thermosetting plastics, thermoplastic and rubber. Thermoplastic includes fields like PS, PE, PP, PA, TPU, PET, PC, PMMA and ABS.



产品应用范围: Field of application

一次注射量 45-51000g; 锁模力 200-60000kN; 加工原料有热固性塑料、热塑性塑料和橡胶三种。热塑性塑料包括 PS、PE、PP、PA、TPU、PET、PC、PMMA、ABS 等领域。

An injection quantity 45-51000g; Clamping force 200kN- 60000kN; Processing raw material has three kinds of methods: thermosetting plastics, thermoplastics and rubber.

Thermoplastics including PS, PE, PP, PA, TPU, ABS, PET, PC, PMMA, etc



Repair of screw barrel 螺杆机筒的修复工程

螺杆修复方法： Methods Repair of screw barrel



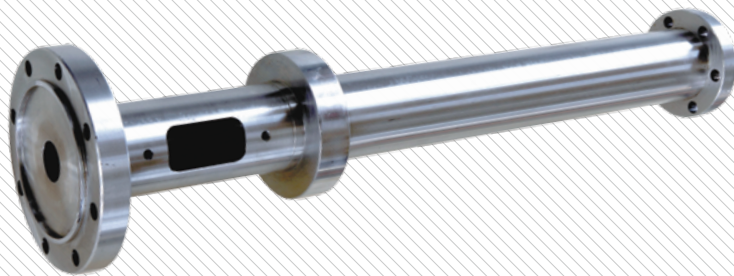
- 1、扭断的螺杆要根据机筒的实际内径来考虑，按与机筒的正常间隙进行新螺杆的外径偏差进行制造。
- 2、磨损螺杆直径缩小的螺纹表面经处理后，热喷涂耐磨合金，然后再经磨削加工至尺寸。这种方法一般有专业喷涂厂加工修复，费用还比较低。
- 3、在磨损螺杆的螺纹部分堆焊耐磨合金。根据螺杆磨损的程度堆焊 1~2mm 厚，然后磨削加工螺杆至尺寸。这种耐磨合金由 C、Cr、Vi、Co、W 和 B 等材料组成，增加螺杆的抗磨损和耐腐蚀的能力。专业堆焊厂对这种加工的费用很高，除特殊要求的螺杆，一般很少采用。
- 4、修复螺杆也可使用表面镀铬方法，铬也是耐磨和抗腐蚀的金属，但硬的铬层较容易脱落。

1. The broken screw should be repaired according to the actual diameter of the barrel. A new screw should be manufactured based on the designed outer diameter tolerance according to the normal clearance with the barrel.
2. The thread surface of the worn screw with shrinking diameter should be hot sprayed and painted with abrasion-resistant alloy after treatment, and then be ground to designed dimension. This repair is generally finished in a professional spray painting factory, and usually costs less.
3. The thread of a worn screw should be bead welded with abrasion-resistant alloy. It should be bead welded for 1~2mm thick according to the degree of wear and then be grounded to designed dimension. The abrasion-resistant alloy is made of materials like C, Cr, Vi, Co, W and B, which can improve the screw's resistance to wear and corrosion. Generally, this repair will cost much in a professional bead welding factory. Thus it is usually not adopted unless otherwise specified.
4. Hard chromium plating on surface can also be used for the repair of screw. Chromium is resistant to wear and corrosion, but hard chromium plating easily fall off.

机筒修复如下： Repair of barrel

机筒的内表面硬度高于螺杆，它的损坏要比螺杆来得晚。机筒的报废就是内径直径由于时间磨损而增大。它的修复方法如下：

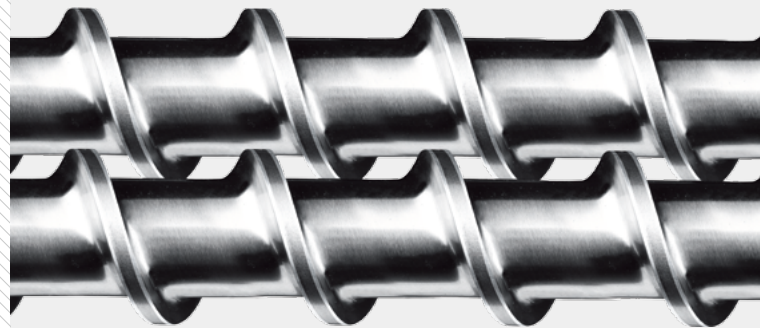
- 1、因磨损增加直径的机筒，如果还有一定的渗氮层时，可把机筒内孔直接进行镗孔，研磨至一个新的直径尺寸，然后按此直径配制新螺杆。
- 2、机筒内径经机加工修整重新浇铸合金，厚度在 1~2mm 间，然后精加工至尺寸。
- 3、一般情况下机筒的均化段磨损较快，可将此段（取 5~7D 长）经镗孔修整，再配一个渗氮合金钢衬套，内孔直径参照螺杆直径，留在正常配合间隙，进行加工配制。



The inner surface of a barrel has higher hardness than a screw. Thus it is not as easily worn as the screw. If the inner diameter of the barrel is increased as time goes by, the barrel might be scraped. Methods:

1. If there is still a certain nitriding layer in the barrel with diameter increasing due to wear, bore a hole inside the barrel, grind the barrel to a new diameter, and then make a new screw according to this diameter.
2. Trim the inner diameter, cast the inner side with alloy again at 1~2mm thick, and then process it to the designed dimension.
3. Generally, the homogenizing section of a barrel is easily worn. For that, trim the involved section (5~7D long) via boring, and install a nitrided alloy steel sleeve. The diameter of inner hole should be determined based on that of the screw. Normal fit clearance should be reserved for processing.

Bimetallic Screw And Barrel 双合金螺杆机筒



用途区分： Application

各种立式、卧式射出机、挤出机、注塑机、电木机、橡胶筒、吹膜机等。
all kinds of vertical and horizontal injection machines, extrusion machines, injection machine, bakelite machine, rubber tube, blown film machine, etc.

加工范围： Processing range:

双合金螺杆：外径：Φ15mm~Φ360mm；有效长度：10000mm
双合金料管：内径：Φ14mm~Φ200mm；有效长度：6000mm
皮膜密度：98~99.8%
硬度：Hv1100~1400℃
密著强度：10000Psi 以上

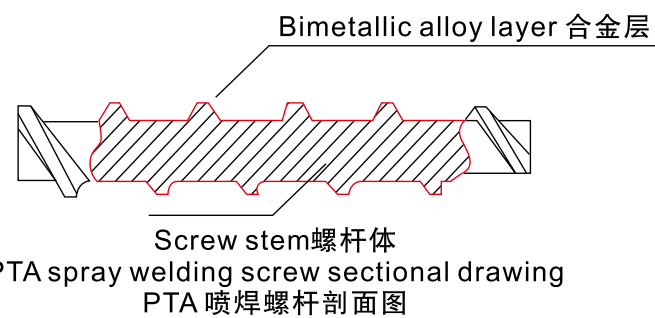
双金属机筒：母材 38CrMoAlA、40Cr、42CrMo
双金属螺杆：母材 38CrMoAlA、31CrMoV9(国外)

Dual alloy screw: diameter: Φ15mm ~ Φ360mm;
Effective length: 10000mm
Dual alloy material tube: inner diameter 14mm ~ Φ200mm;
Effective length: 6000mm
Skin membrane density: 98~99.8%
Hardness: Hv1100~1400℃
Sticky strength: more than 10000Psi

Bimetallic barrel material: 38CrMoAlA、40Cr、42CrMo
Bimetallic screw material: 38CrMoAlA、31CrMoV9(foreign)

螺杆 / 机筒合金粉末（铁 / 镍基）： Screw / Barrel alloy powder (iron / nickel base)

GK-A: 特殊用途合金
GK-B: 高耐磨性、高耐腐蚀性、韧性好、抗裂性好
GK-C: 高耐磨性、高耐腐蚀性
GK-D: 高耐磨性
GK - A: special-purpose alloy
GK - B: high wear resistance, high corrosion resistance, good toughness, good crack resistance
GK - C: high wear resistance, high corrosion resistance
GK - D: high wear resistance



产品应用范围： Field of application

适用于 LCP, PA+GF, PET+GF, PBT+GF, PC+GF 等各类塑料添加玻璃纤维，防火剂，碳粉及 PPA, PPO, LCP, 磁粉, PC 等特殊工程塑胶。

suitable for LCP, PA + GF, PET + GF, PBT + GF, PC + GF all kinds of plastic additives such as glass fiber, fire-proof agent, carbon powder and PPA, PPO, LCP, magnetic powder, special engineering plastics, such as PC.

Material and technical parameters

材料应用及技术参数



螺杆原材料应用 / Raw material application:

原材料 / Raw material:	成品处理要求: Finished product treatment requirements:
38CrMoAlA, SACM645, 42CrMo	渗氮处理 /Nitriding treatment
42CrMo, AISI 4140	电镀硬铬层 /Chromed
Cr12MoV, SKD11, SKD61, YXMI, EFZD, DC53, SKH55, SKH59, SKH58, SKH51, SKH—9, ASP60, ASP30, ASP25, CW6Mo5Cr4V2	合金钢, 高频淬火 Alloy steel ,High frequency quenching
4Cr5MoSiV1, SKD—61, SKD—11	喷涂双金属合金层再渗氮处理 Spray bimetallic layer ,and nitriding treatment
YPT72, DAC—MAGIC, 4 Cr5MoSiV1	双金属整体包覆 /Cover bimetallic
HPM38, SI36, SUS440, 9Cr18MoV	不锈【铁】钢, 高频淬火 Stainless steel 【iron】, High frequency quenching
GHII3	高温工作自然硬化 High temperature,hardening work nature

机筒原材料应用 / Barrel raw material application:

原材料 / Raw material:	成品处理要求: Finished product treatment requirements:
38CrMoAlA, SACM645	渗氮处理 Nitriding treatment
Cr12MoV, Cr12	合金钢, 高频淬火 Alloy steel, high frequency quenching
38CrMoAlA, SACM645, 40Cr, AISI4140, 42CrMo	内孔离心浇铸双金属 The inner hole centrifugal casting bimetallic
GHII3	高温工作自然硬化 High temperature ,hardening work nature

技术参数 Technical parameters:

- ◎ 调质硬度: HB260°~320°
- ◎ 氮化硬度: HV950°~1000°
- ◎ 氮化深度: 0.50~0.7mm
- ◎ 氮化脆性: ≤二级
- ◎ 表面粗糙度: Ra0.4
- ◎ 螺杆直线度: 0.015mm
- ◎ 氮化后表面镀硬铬度: HV ≥ 950HV
- ◎ 镀铬层厚度: 0.05~0.10mm
- ◎ 合金深度: 0.8~2.0mm
- ◎ 双合金硬度: HRC56°~65°
(合金采用【铁】【镍】【钨】【钼】基合金)
- ◎ Quenched and tempered hardness: Hb260°~320°
- ◎ Nitriding hardness: HV950°~1000°
- ◎ Nitriding depth: 0.50 ~ 0.7 mm
- ◎ Nitride brittleness: ≤ 2 grades
- ◎ The surface roughness: Ra0.4
- ◎ Straightness of screw: 0.015 mm
- ◎ Surface hard Degree of chromed after nitriding : HV ≥ 950HV
- ◎ Chromed layer thickness: 0.05~0.10mm
- ◎ Alloy depth: 0.8~2.0mm
- ◎ Dual alloy, hardness HRC56°~65°
(alloy adopted [iron] [nickel] [w] [molybdenum] alloy)

